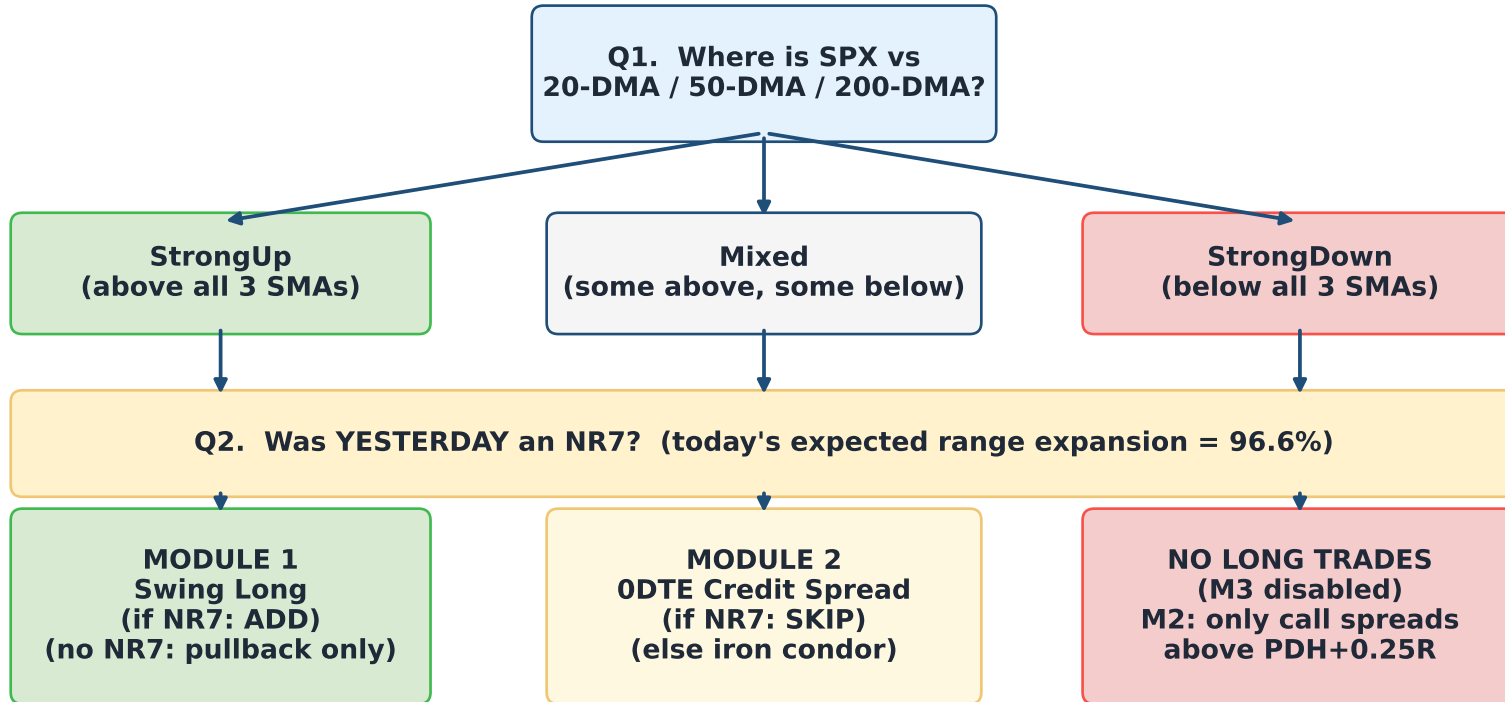


SPX Trading Playbook – Daily Decision Flow

Three modules, one decision tree. Built from 1,589 daily + 121,981 5-min bars (2020-2026).

EVERY DAY at 9:25 ET – answer 3 questions, pick 1 module

(1) What's the regime? (2) Was yesterday an NR7? (3) What's the gap saying?



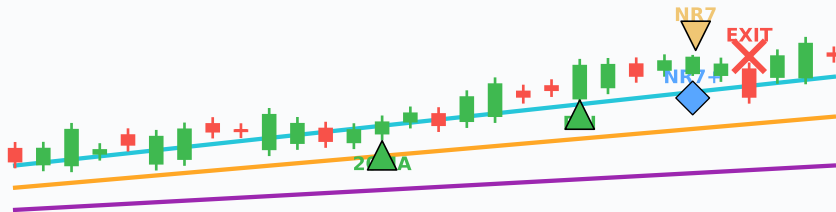
Q3. GAP CLASS at the open? → GapUp_Big = continuation, sell put spread. GapDn_Big = continuation, sell call spread. Flat / small = iron condor.

Module 1 — Swing Long

Trend-regime continuation. Long-only. Daily chart. Hold days→weeks.

How it looks on TradingView

Daily chart with SMA20 / 50 / 200; green tint = StrongUp regime



Aqua = SMA20 Orange = SMA50 Purple = SMA200

ENTRY rules

When in StrongUp regime

- ▲ Buy on pullback to 20-DMA (today's low touches it, close stays above it)
- ▲ Buy on Friday close in StrongUp
- ◇ Add ½ unit on NR7 day inside regime

EXIT rules

Get out on either

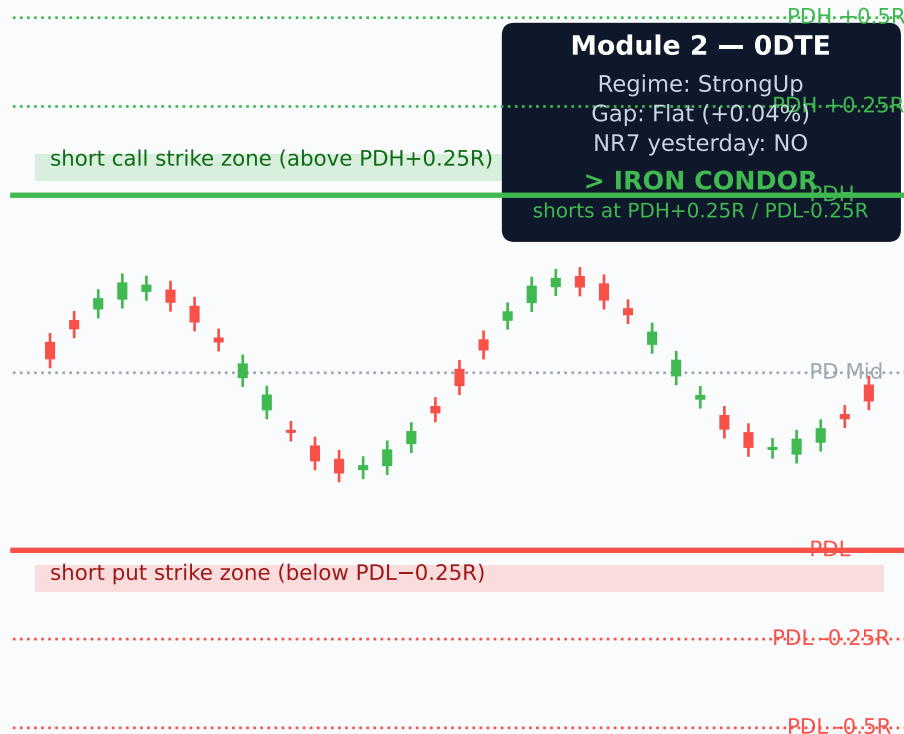
- × First close below 20-DMA
- × Single +2% C2C day (mean-revert signal, $p = 0.04$)
~0.2% per day held
60-65% daily win rate

Module 2 — 0DTE Credit Spread

Sell premium anchored to PRIOR-DAY range. Best on intraday SPX (5-min or 15-min).

How it looks on TradingView

Intraday chart, prior-day projection levels, gap classification badge



WHICH STRUCTURE?

(after the regime+NR7 gate)

Gap-up >0.5% & StrongUp:
sell PUT spread, short \approx PDL-0.25R

Gap-down >0.5% & StrongDown:
sell CALL spread, short \approx PDH+0.25R

Flat / small gap, in regime:
IRON CONDOR at PDH+0.25R
and PDL-0.25R

NR7 yesterday: SKIP

WIDTH & MANAGEMENT

Spread width vs pin rate

$\pm 0.5\%$ → 18% pin rate
 $\pm 0.75\%$ → 36% pin rate
 $\pm 1.0\%$ → 53% pin rate
 $\pm 1.5\%$ → 74% pin rate

Always defined risk
Take 50% of credit, walk
Skip Wed FOMC days

Module 3 — ORB Long

Intraday momentum (Opening Range Breakout, long-only). 5-min SPX chart. Hold to MOC.

How it looks on TradingView

5-min chart. First 15 min sets OR. Buy-stop triggers at OR high.

15-min OR ends

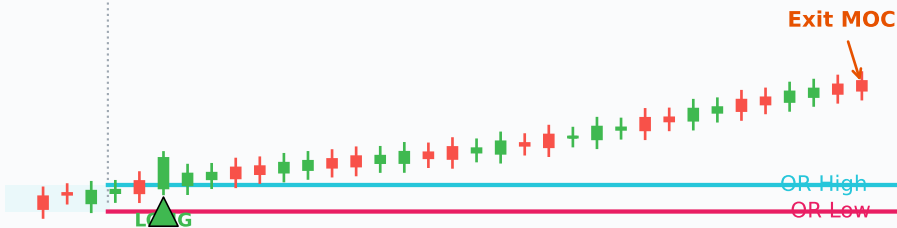
Module 3 — ORB Long

Regime: StrongUp

Gap: +0.18%

Open above PDH ✓

> **HIGH-CONVICTION**



ENTRY rules

Filters (ALL must pass)

- ✓ Regime = StrongUp
- ✓ Gap > -0.5%
- ✓ Optional: open above PDH (raises win rate to 60%+)

Trigger

- ▲ Buy-stop at 15-min OR HIGH
- First touch only

Skip if

- X Below 20-DMA
- X Big gap-down (continuation)

EXIT rules

Set on entry

- Stop: OR LOW
- Target: market on close (MOC)

No short trades.
Short side has no edge.

Expected: 57.2% win rate,
+0.05% mean per trade

Quick Reference Card

One page. Print it. Keep it next to your monitor.

MODULE 1

Swing Long

Daily chart • Hold days→weeks

WHEN

Regime = StrongUp
(close above 20/50/200 SMA)

ENTRY (any of)

- Low touches 20-DMA, close back above
- Friday close in StrongUp
- ½ add on NR7 day

EXIT (either)

- Close below 20-DMA
- Single +2% C2C day

EDGE

+0.18-0.26% / day held
60-65% daily win rate

MODULE 2

ODTE Credit Spread

Intraday • Same-day expiry

GATE

Yesterday NR7 → SKIP
(96.6% range expansion bad for premium)

SETUP MATRIX

GapUp big + StrongUp:
PUT spread @ PDL-0.25R
GapDn big + StrongDown:
CALL spread @ PDH+0.25R
Flat / small gap + regime:
IRON CONDOR at PDH+0.25R
and PDL-0.25R

WIDTH

±1% = 53% pin rate
±1.5% = 74% pin rate
Take 50% credit, walk

MODULE 3

ORB Long

5-min chart • Hold to MOC

FILTERS (ALL)

Regime = StrongUp
Gap > -0.5% (no big gap-down)
Bonus: open above PDH

OPENING RANGE

First 15 min after open
Mark OR HIGH and OR LOW

TRIGGER

Buy-stop at OR HIGH
Stop at OR LOW
Exit at MOC (no overnight)

EDGE

57.2% win rate
+0.05% mean / trade
Long-only — short has no edge

⚠ **Sample is 2020-2026 (bull-biased). Pre-cost. Always check regime first — it dominates everything.**